

# 钉扣机零件手册

ZJ373

BUTTON ATTACHING MACHINE PARTS BOOK



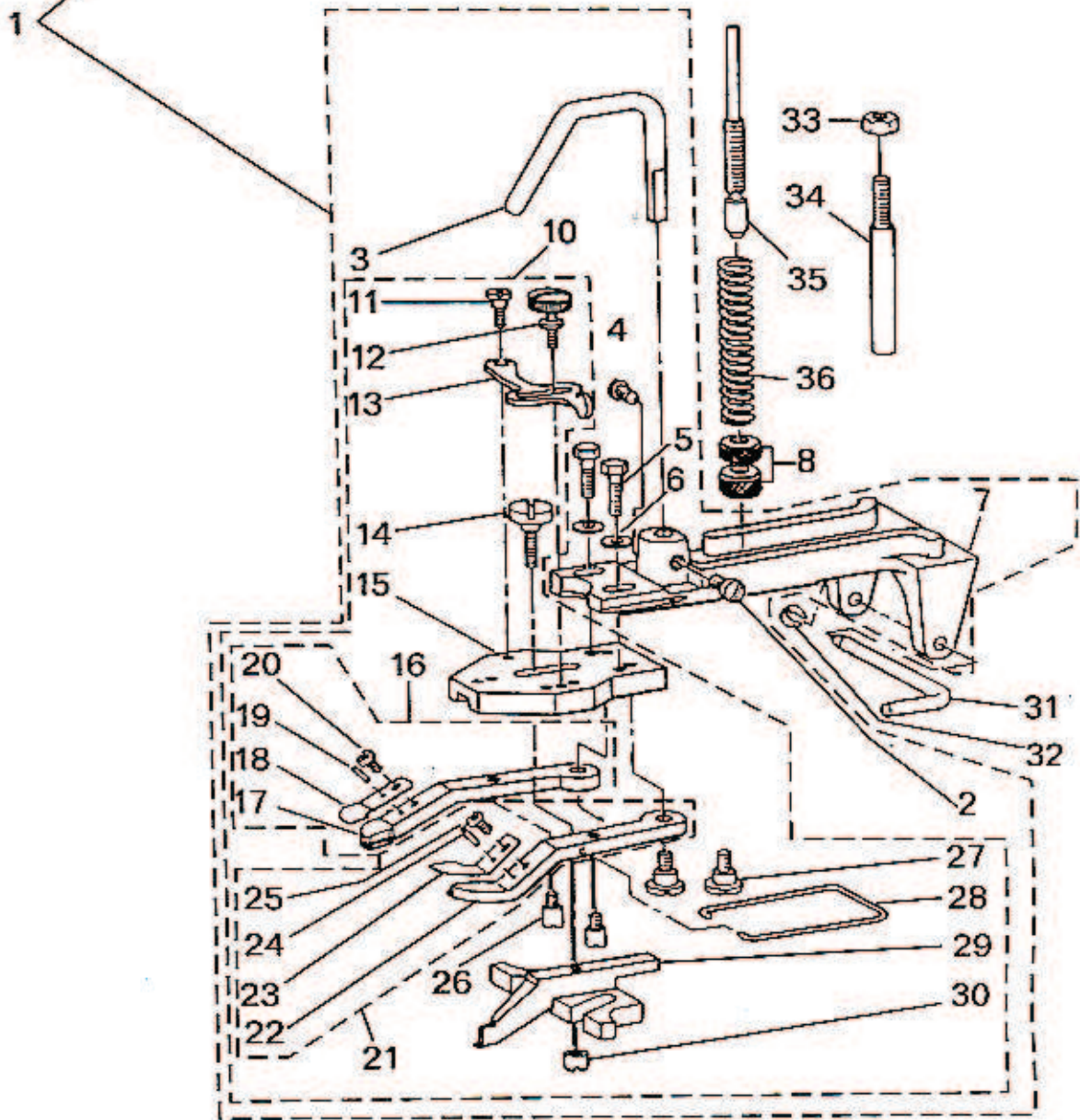
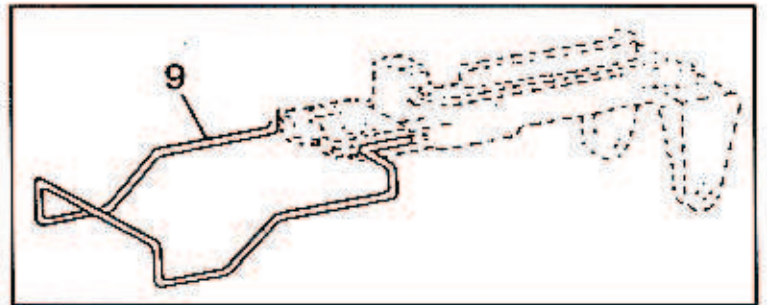
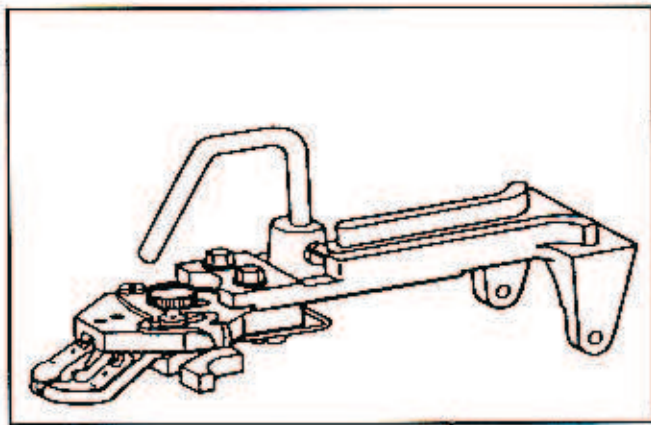
# 目 录

## CONTENTS

1. 平扣夹部分 .....	1
BUTTON CLAMP MECHANISM COMPONENTS	
2. 机壳盖板部分 .....	3
ARM & MISCELLANEOUS COVERS COMPONENTS	
3. 线钩轴部分 .....	5
LOOPER SHAFT MECHANISM COMPONENTS	
4. 夹线器、线钳部分 .....	7
NIPPER & THREAD TENSION PARTS COMPONENTS	
5. 送布机构部分 .....	9
FEED PLATE COMPONENTS	
6. 提升扣夹联动机构部分 .....	11
BUTTON CLAMP LIFTER COMPONENTS	
7. 驱动轴部分 .....	13
NEEDLE BAR DRIVING MECHANISM COMPONENTS	
8. 针杆部分 .....	14
NEEDLE BAR DRIVING MECHANISM COMPONENTS	
9. 制动装置部分 .....	15
STOP MOTION MECHANISM COMPONENTS	
10. 针数调节部分 .....	16
STITCH SELECTING PARTS COMPONENTS	

# 1. 平扣夹部分

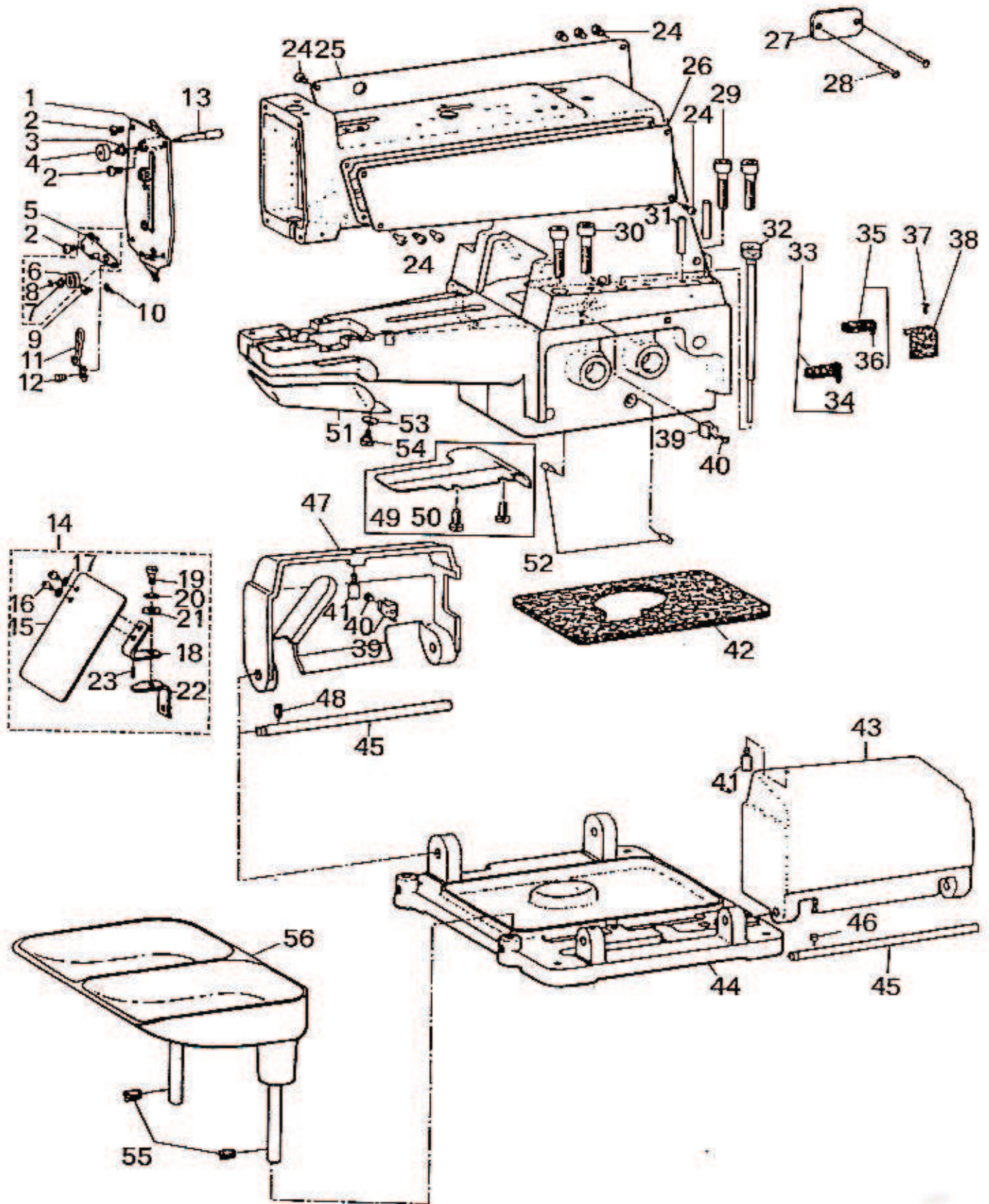
## TUTTON CLAMP MECHANISM COMPONENTS



序号	代 号	零 件 名 称	Description	数量
1	1-1	平扣压脚装置组件	FLAT BUTTON CLAMP ASM	1
2	1-2	螺钉 SM15/64"×28 L=8 D=8 H=4.2	SCREW 15/64 - 28 L=8	1
3	1-3	扣夹提升钩	BUTTON CLAMP LIFTING ROD	1
4	1-4	螺钉 SM15/64"×28 L=8 D=8 H=4.2	SCREW 15/64 - 28 L=8	1
5	1-5	螺钉 SM3/16"×32 L=13.5 S=8 H=3	SCREW 3/16 - 32 L=13.5	2
6	1-6	垫圈 5	WASHER 5×10.5×1	2
7	1-7	扣夹座	BUTTON CLAMP HOLDER	1
8	1-8	扣夹压力调节螺母	THREAD TENSION NUT	2
9	1-9	护手架	FINGER GUARD	1
10	1-10	夹爪安装架组件	JAW LEVER HOLDER ASM	1
11	1-11	预开杆螺轴 D=5.50 H=1.8	HINGE SCREW D=5.50 H=1.8	1
12	1-12	预开杆紧固螺钉	CLAMP SCREW A	1
13	1-13	扣夹预开限位杆	SNAP FASTENER CLAMP STOP LEVER	1
14	1-14	滑动导向爪螺轴 D=5.5 H=3	HINGE SCREW D=5.5 H=3	1
15	1-15	扣夹爪杠杆座	JAW LEVER HOLDER	1
16	1-16	左夹爪组件	BUTTON CLAMP LEVER JAW, LEFT A	1
17	1-17	左夹爪	BUTTON CLAMP LEVER JAW (LEFT)	1
18	1-18	钮扣左弹簧压板	BUTTON HOLDING SPRING, LEFT	1
19	1-19	销 $\phi 2.5 \times 6$	BUTTON CLAMP LOCATING PIN	1
20	1-20	螺钉 SM9/64"×40 L=3.5 D=6 H=2.5	SCREW 9/64 - 40 L=3.5	1
21	1-21	右夹爪组件	BUTTON CLAMP LEVER JAW, RIGHT	1
22	1-22	右夹爪	BUTTON CLAMP LEVER JAW RIGHT	1
23	1-23	钮扣右弹簧压板	BUTTON HOLDING SPRING, RIGHT	1
24	1-24	销 $\phi 2.5 \times 6$	BUTTON CLAMP LOCATING PIN	1
25	1-25	螺钉 SM9/64"×40 L=3.5 D=6 H=2.5	SCREW 9/64 - 40 L=3.5	1
26	1-26	夹爪开合销	BUTTON CLAMP STOP PIN	2
27	1-27	夹爪螺轴 D=6.35 H=3.9	HINGE SCREW D=6.35 H=3.9	2
28	1-28	夹爪弹簧	BUTTON CLAMP SPRING	1
29	1-29	扣夹滑动导向爪	BUTTON CLAMP SLIDE	1
30	1-30	导向爪紧固螺母	NUT	1
31	1-31	扣夹链接销	HINGE PIN	1
32	1-32	开口挡圈 3	SNAP RING	1
33	1-33	螺母 SM1/4"×24 S=11 H=5	NUT 1/4 - 24	1
34	1-34	扣夹限位杆	BUTTON CLAMP STOPPER PIN	1
35	1-35	扣夹压力调节杆	BUTTON CLAMP PRESSURE ADJUSTING BAR	1
36	1-36	扣夹压力弹簧	PRESSURE ADJUSTING SPRING	1

## 2. 机壳盖板部分

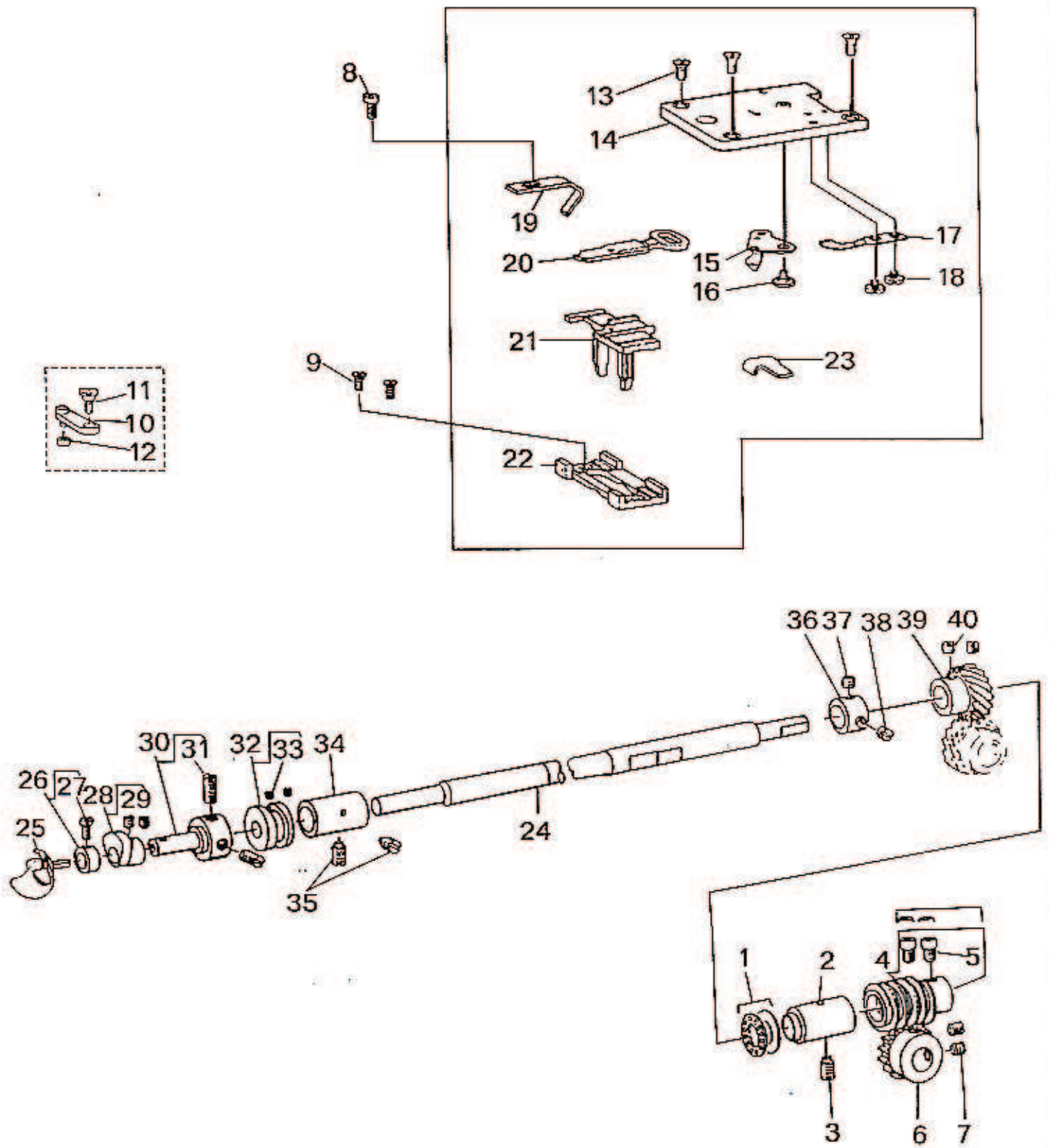
### ARM & MISCELLANEOUS COVERS COMPONENTS



序号	代 号	零 件 名 称	Description	数量
1	2-1	机壳前盖板组件	FRONT COVER ASM	1
2	2-2	螺钉 SM11/64*×40 L=8 D=7 H=2.5	SCREW 11/64 - 40 L=8	3
3	2-3	第三夹线簧	TENSION SPRING	1
4	2-4	松线杆螺母	NIPPER RELEASING PLUNGER THUMB	1
5	2-5	第三夹线器固定板组件	THREAD TENSION GUIDE NO. 3 ASM	1
6	2-6	第三夹线板	TENSION DISC	2
7	2-7	第三夹线簧	TENSION SPRING	1
8	2-8	挡圈 3	E - SHAPED SNAP RING (3MM)	1
9	2-9	螺钉 SM11/64*×40 L=3.2 D=8 H=1.5	SCREW 11/64 - 40 L=3.2	1
10	2-10	第四过线杆	THREAD GUIDE NO.4	1
11	2-11	第三过线杆	THREAD GUIDE NO.3	1
12	2-12	螺钉 SM11/64*×40 L=8 D=8 H=1.5	SCREW 11/64 - 40 L=8	1
13	2-13	松线杆	NIPPER RELEASING PLUNGER	1
14	2-14	安全板组件△	SAFETY PLATE ASM	1
15	2-15	安全板	SAFETY PLATE	1
16	2-16	螺钉 SM11/64*×40 L=7 D=7 H=2.5	SCREW 11/64 - 40 L=7	2
17	2-17	垫圈 5	WASHER 4.5×10.0×0.8	2
18	2-18	安全板安装板	SAFETY PLATE INSTALLING PLATE	1
19	2-19	螺轴 D=6 H=4	HINGE SCREW D=6 H=4	1
20	2-20	安全板弹簧垫圈	DISC SPRING	1
21	2-21	垫圈 6.5×13×0.8	WASHER 6.5×13×0.8	1
22	2-22	安全板安装架	SAFETY PLATE MOUNTING BASE	1
23	2-23	销 2×6	SPRING PIN 2×6	1
24	2-24	螺钉 SM11/64*×40 L=8 D=7 H=2.5	SCREW 11/64 - 40 L=8	8
25	2-25	左面板	SIDE COVER, LEFT	1
26	2-26	右面板	SIDE COVER, RIGHT	1
27	2-27	标牌	MARK PLATE	1
28	2-28	铆钉 2×5	RIVET 2×5	2
29	2-29	螺钉 M8×30	SCREW M8 L=30	2
30	2-30	螺钉 M8×35	SCREW M8 L=35	2
31	2-31	导销	GUIDE PIN	2
32	2-32	固定螺栓组件	SET SCREW ASM	1
33	2-33	大贮油毛毡	OIL FELT ASM., LARGE	1
34	2-34	油线 3×180	OIL WICK	1
35	2-35	小贮油毛毡	OIL FELT ASM., SMALL	1
36	2-36	油线 3×80	OIL WICK	1
37	2-37	螺钉 SM11/64*×40 L=7.8 D=8 H=2.2	SCREW 11/64 - 40 L=7.8	1
38	2-38	蜗杆用毛毡	OIL SUPPLY FELT	1
39	2-39	侧面盖弹簧卡	SIDE COVER SPRING	2
40	2-40	螺钉 SM9/64*×40 L=4.5 D=6 H=2.5	SCREW 9/64 - 40 L=4.5	2
41	2-41	侧面盖弹簧轴	SCREW STUD	2
42	2-42	吸油毛毡	OIL DRIP FELT (A) 5MM	1
43	2-43	右侧盖	SIDE COVER, RIGHT	1
44	2-44	机器辅助底板	MACHING SUB - BASE	1
45	2-45	侧盖轴	SIDE COVER HINGE SHAFT	2
46	2-46	螺钉 SM15/64*×28 L=4	SCREW 15/64 - 28 L=4	1
47	2-47	左侧盖	COVER, LEFT	1
48	2-48	螺钉 SM15/64*×28 L=10.5	SCREW 15/64 - 28 L=10.5	1
49	2-49	底板防油盖	BED OIL SHIELD	1
50	2-50	螺钉 SM11/64*×40 L=7.8 D=8 H=2.2	SCREW 11/64 - 40 L=7.8	2
51	2-51	线钩盖	LOOPER COVER	1
52	2-52	送布凸轮定位指针	CAM INDICATING PIN	2
53	2-53	弹簧垫圈 6.5×14.0×17	SPRING WASHER 6.5×14.0×17	1
54	2-54	螺轴 D=6 H=2.7	HINGE SCREW D=6 H=2.7	1
55	2-55	螺钉 SM15/64*×28 L=7	SCREW 15/64 - 28 L=7	2
56	2-56	托盘组件	BUTTON TRAY ASM	1

### 3. 线钩轴部分

#### LOOPER SHAFT MECHANISM COMPONENTS

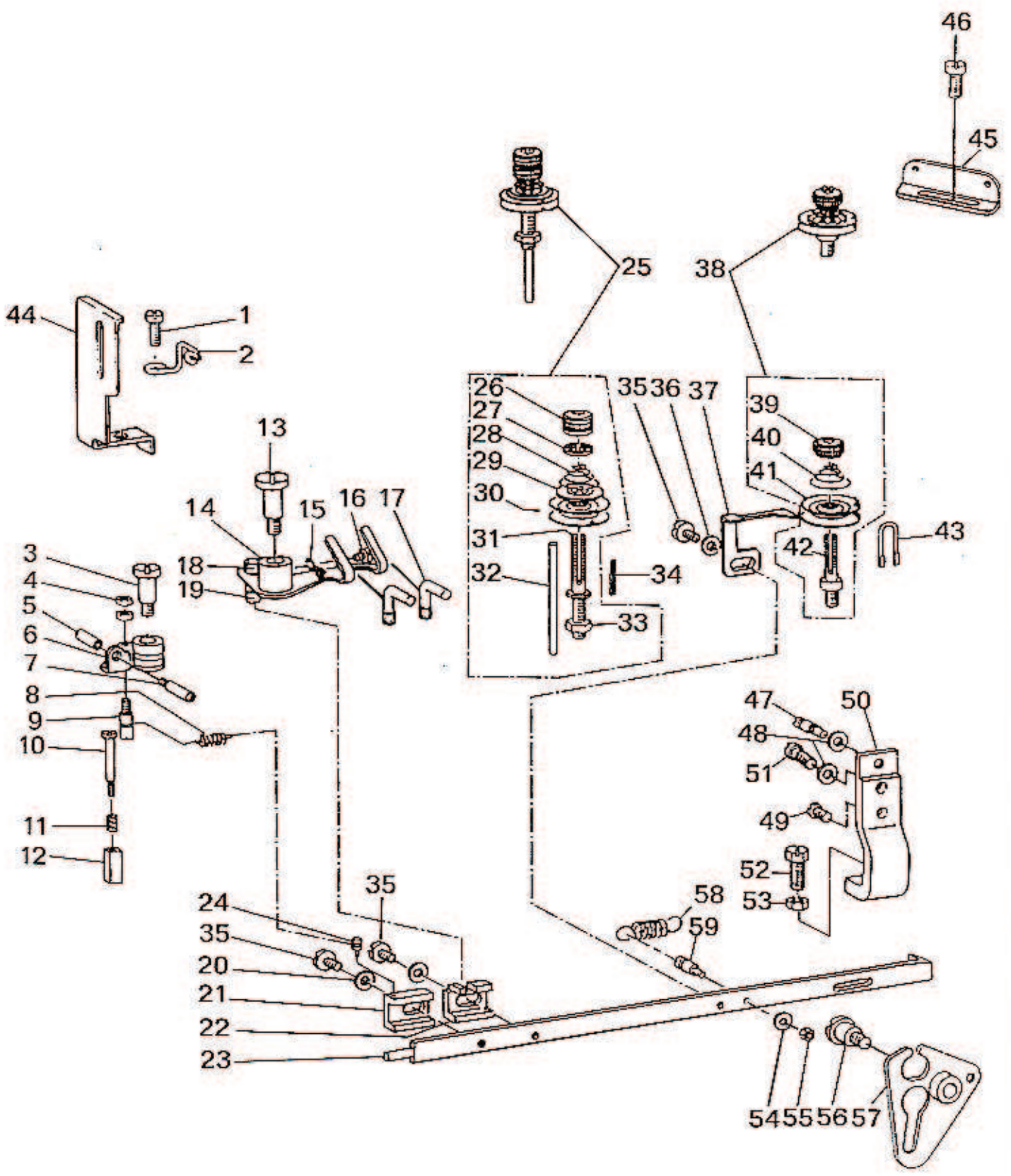


序号	代 号	零 件 名 称	Description	数量
1	3-1	线钩轴推力球轴承	THRUST BALL BEARING	1
2	3-2	线钩轴后套	LOOPER SHAFT BUSHING, REAR	1
3	3-3	螺钉 SM15/64"×28 L=10.5	SCREW 15/64-28 L=10.5	1
4	3-4	蜗杆	DRIVEN WORM ASM	1
5	3-5	螺钉 SM1/4"×40 L=7.0 D=7 H=4	SCREW 1/4-40 L=7.0	2
6	3-6	蜗轮	CAM SHAFT DRIVEN GEAR ASM	1
7	3-7	螺钉 SM1/4"×40 L=6.0 S=3	SCREW 1/4-40 L=6.0	2
8	3-8	螺钉 SM11/64"×40 L=7 D=8 H=2.2	SCREW 11/64-40 L=7	1
9	3-9	螺钉 SM11/64"×40 L=7 D=6 H=1.7	SCREW 11/64-40 L=7	2
10	3-10	推线叉摆杆(组件)	LOOP POSITIONING FINGER LEVER	1
11	3-11	螺轴 D=6.35 H=2.4	HINGE SCREW D=6.35 H=2.4	1
12	3-12	推丝凸轮滚子	LOOP POSITIONING FINGER LEVER	1
13	3-13	螺钉 SM11/64"×40 L=8.5 D=7.4	SCREW 11/64-40 L=8.5	3
14	3-14	针板	THROAT PLATE	1
15	3-15	动剪刀	MOVING KNIFE ASM.	1
16	3-16	螺轴 D=6 H=0.85	HINGE SCREW D=6 H=0.85	1
17	3-17	固定剪刀	COUNTER KNIFE	1
18	3-18	螺钉 SM1/8"×44 L=3 D=9 H=1.5	SCREW 1/8-44 L=3.0	2
19	3-19	护针板	NEEDLE GUARD	1
20	3-20	推线叉	YOKE SLIDE	1
21	3-21	推线叉架	POSITIONING FINGER YOKE SLIDE	1
22	3-22	推线叉架滑座	YOKE SLIDE INSERT	1
23	3-23	动剪刀位置调整块	GAUGE	1
24	3-24	线钩轴	LOOPER SHAFT	1
25	3-25	线钩	LOOPER	1
26	3-26	线钩紧固圈	THRUST COLLAR ASM	1
27	3-27	螺钉 SM9/64"×40 L=6.1	SCREW 9/64-40 L=6.1	1
28	3-28	推线三角凸轮	LOOP POSITIONING FINGER CAM ASM	1
29	3-29	螺钉 SM11/64"×40 L=3.5	SCREW 11/64-40 L=3.5	2
30	3-30	凸轮及线钩安装轴	LOOPER & CAM SLEEVE	1
31	3-31	螺钉 SM15/64"×28 L=4	SCREW 15/64-28 L=4.0	2
32	3-32	推线凸轮	LOOP POSITIONING FINGER ASM	1
33	3-33	螺钉 SM11/64"×40 L=2.8	SCREW 11/64-40 L=2.8	2
34	3-34	线钩轴前套	LOOPER SHAFT BUSHING FRONT	1
35	3-35	螺钉 SM15/16"×28 L=10.5	SCREW 15/64-28 L=10.5	2
36	3-36	线钩轴挡圈 D=11.11 W=10	THRUST COLLAR ASM D=11.11 W=10	1
37	3-37	螺钉 SM1/4"×40 L=5 S=3	SCREW 1/4-40 L=5	1
38	3-38	螺钉 SM1/4"×40 L=3	SCREW 1/4-40 L=3.0	1
39	3-39	线钩轴齿轮	LOOPER SHAFT DRIVEN GEAR ASM.	1
40	3-40	螺钉 SM1/4"×40 L=6 S=3	SCREW 1/4-40 L=6.0	2



# 4. 夹线器、线钳部分

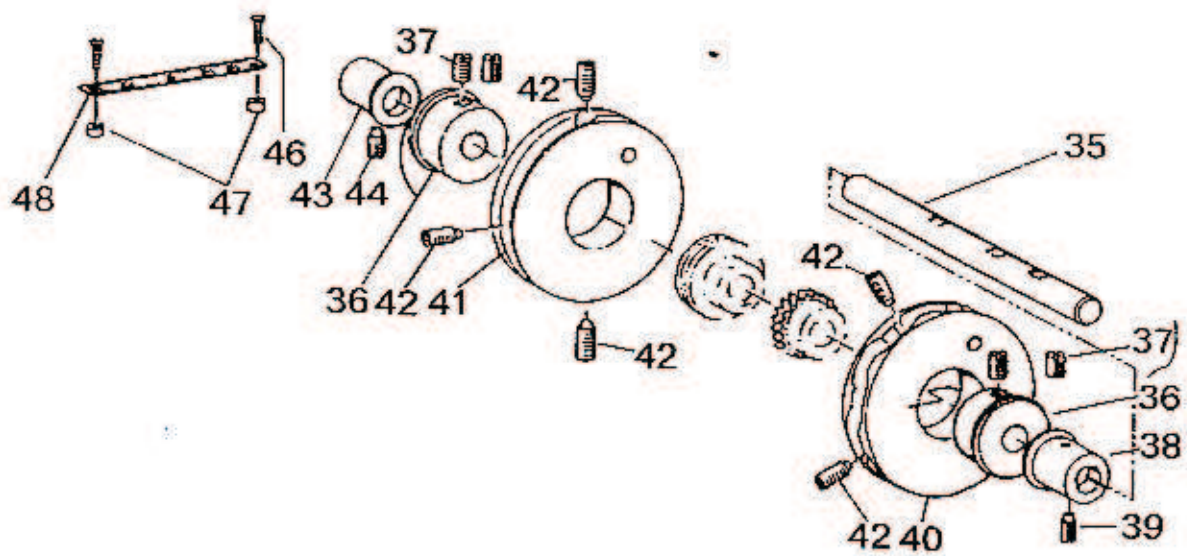
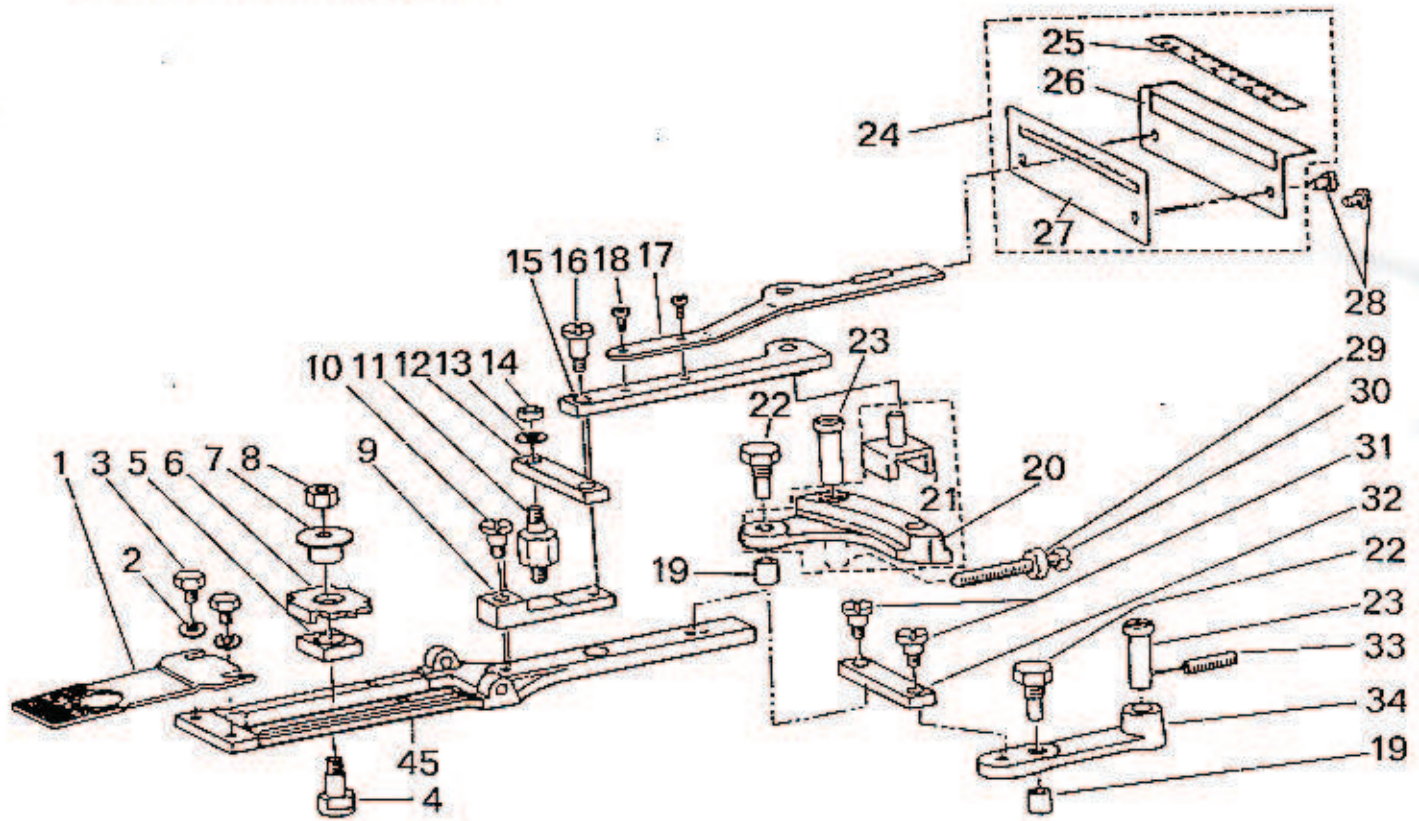
NIPPER & THREAD TENSION PARTS COMPONENTS



序号	代 号	零 件 名 称	Description	数量
1	4-1	螺钉 SM15/64" × 28 L=12 D=10 H=3.4	SCREW 15/64-28 L=12	1
2	4-2	第二过线杆	THREAD GUIDE NO.2	1
3	4-3	螺轴 D=7.94 H=12.7	HINGE SCREW D=7.94 H=12.7	1
4	4-4	螺母 SM1/8" × 44 S=5 H=2	NUT 1/8-44	2
5	4-5	松线销螺母	NUT	1
6	4-6	线钳	THREAD NIPPER ASM	1
7	4-7	线钳松线销	THREAD RELEASING SCREW STUD	1
8	4-8	线钳拉伸弹簧	NIPPER BAR BLOCK SPRING	1
9	4-9	线钳拉伸弹簧轴	NIPPER BAR BLOCK SPRING SCREW	1
10	4-10	线钳角柱螺轴 D=4 H=20	SCREW D=4 H=20	1
11	4-11	线钳角柱弹簧	NIPPER BLOCK SPRING	1
12	4-12	线钳角柱	NIPPER BLOCK	1
13	4-13	螺轴 D=7.94 H=15.0	HINGE SCREW D=7.96 H=15.0	1
14	4-14	拨线板	THREAD PULL - OFF LEVER ASM	1
15	4-15	拨线杆过线杆	THREAD GUIDE	1
16	4-16	螺钉 SM9/64" × 40 L=4.6 D=7 H=2.5	SCREW 9/64-40 L=4.6	1
17	4-17	L 型挡线杆	L-SHAPED GUIDE	2
18	4-18	螺母 SM1/4" × 40 S=9 H=4	NUT 1/4-24	1
19	4-19	拨线板拨杆	THREAD PULL - OFF LEVER	1
20	4-20	垫圈 5	WASHER 5×10.5×1	2
21	4-21	线钳驱动块	NIPPER BAR BLOCK	1
22	4-22	拨线杆驱动块	NIPPER BAR BLOCK REAR	1
23	4-23	夹线器调节杆	NIPPER BAR	1
24	4-24	线钳拉伸弹簧销	NIPPER BAR BLOCK SPRING PIN	1
25	4-25	第二夹线器组件	TENSION POST ASM	1
26	4-26	第二夹线器螺母	TENSION NUT	1
27	4-27	夹线器防松盘	ROTATING STOPPER	1
28	4-28	第二夹线器弹簧	THREAD TENSION SPRUNG	1
29	4-29	松线板	THNSION DISC HOLDER	1
30	4-30	夹线板	TENSION DISC	2
31	4-31	第二夹线杆	TENSION POST NO.2	1
32	4-32	夹线板松线杆	TENSION RELEASE PIN	1
33	4-33	螺母 SM1/4" × 24 S=11 H=5	NUT 1/4-24	1
34	4-34	销 2×16	SPRING PIN	1
35	4-35	螺钉 SM3/16" × 28 L=9	SCREW 3/16-28 L=9.0	3
36	4-36	垫圈 5	WASHER 5×10.5×1	1
37	4-37	夹线板浮动板	THREAD TENSION RELEASING LEVER	1
38	4-38	第一夹线器组件	THREAD TENSION ASM	1
39	4-39	第一夹线器螺母	THREAD TENSION NUT	1
40	4-40	第一夹线器弹簧	TENSION SPRING NO.1.	1
41	4-41	夹线板	TENSION DISC	2
42	4-42	第一夹线杆	THREAD TENSION STAFF NO.1	1
43	4-43	第一夹线板定位杆	THREAD GUIDE	1
44	4-44	针杆护板	NEEDLE BAR GUARD	1
45	4-45	第一过线板	THREAD GUIDE NO.1	1
46	4-46	螺钉 SM15/64" × 28 L=12 D=10 H=3.4	SCREW 15/64-28 L=12	1
47	4-47	调节杆导向轴	ADJUSTING SCREW	1
48	4-48	垫圈 4.8×8.4×0.8	WASHER 4.8×8.4×0.8	2
49	4-49	螺钉 SM3/16" × 28 L=9.5 D=7 H=3.4	SCREW 3/64-28 L=9.5	1
50	4-50	调节杆导向架	NIPPRE BAR BEARING BLOCK	1
51	4-51	螺钉 SM3/16" × 28 L=15.5 D=7 H=3.4	SCREW 3/16-28 L=15.5	1
52	4-52	螺栓 SM15/64" × 28 L=14 S=9	BOLT 15/64-28 L=14	1
53	4-53	螺母 SM15/64" × 28 S=9 H=3	NUT 15/64-28	1
54	4-54	垫圈 4	WASHER 3.7×8×1	1
55	4-55	螺母 SM1/8" × 44 S=5 H=3	NUT 1/8-44	1
56	4-56	螺轴 D=7.94 H=8	HINGE SCREW D=7.94 H=8.0	1
57	4-57	调节杆推板	NIPPER BAR ACTUATING LEVER ASM	1
58	4-58	调节杆拉伸弹簧	THREAD TENSION SPRING	1
59	4-59	拉伸弹簧紧固螺钉	NIPPRE BAR SPRING SCREW	1

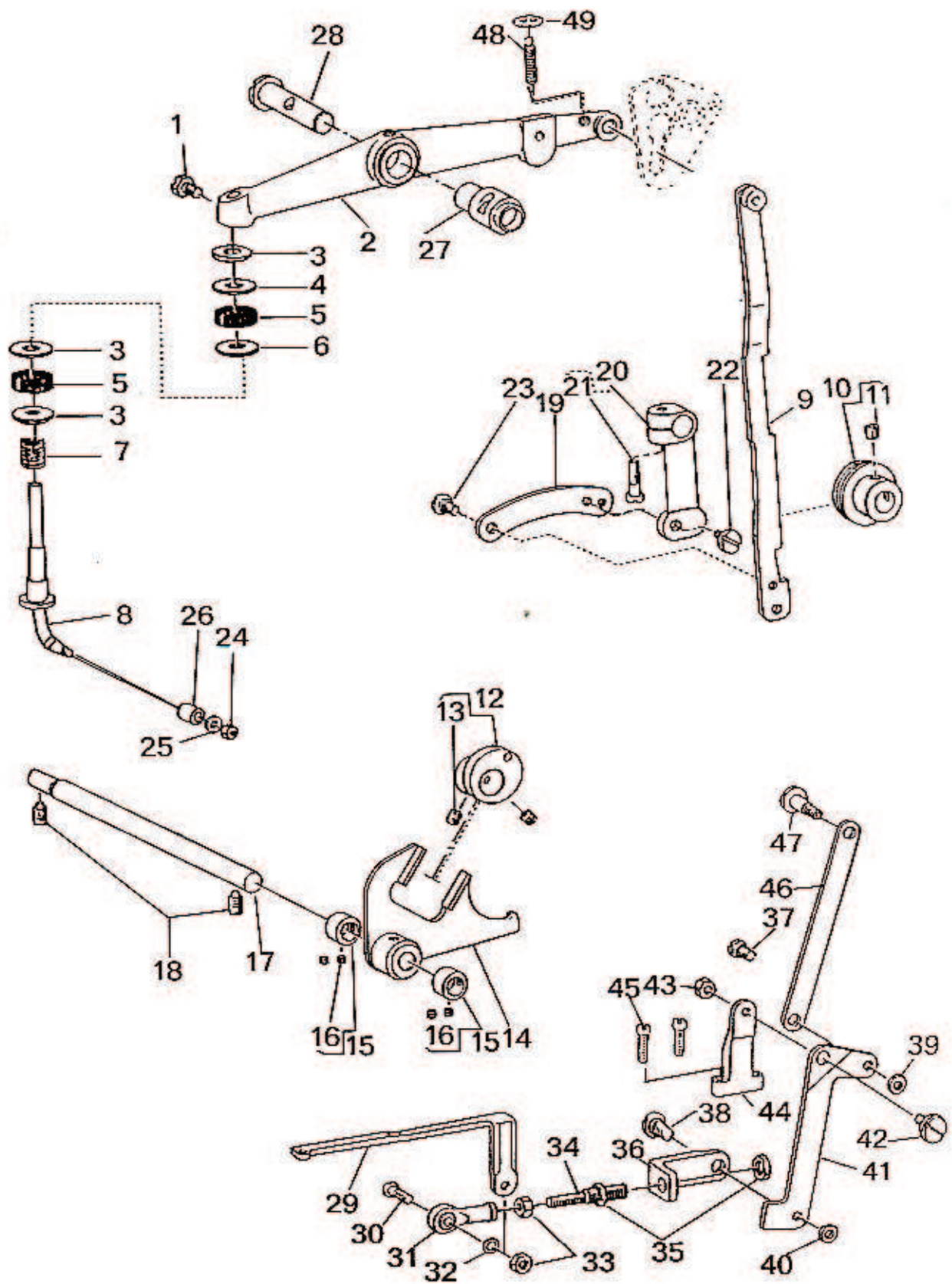
# 5. 送布机构部分

## FEED PLATE COMPONENTS



序号	代号	零件名称	Description	数量
1	5-1	小扣压脚底板	FEED PLATE, SMALL BUTTON	1
2	5-2	垫圈 5	WASHER 5×10.5×1	2
3	5-3	螺栓 SM3/16"×28 L=6 S=10 H=3.5	SCREW 3/16 - 28 L=6	2
4	5-4	螺轴	HINGE SCREW FOR CROSSWISE FEED	1
5	5-5	横送布滑块	INDICATOR PIN BEARING BLOCK	1
6	5-6	横送布指针	CROSSWISE FEED INDICATOR	1
7	5-7	送布指针滑套轴	CROSSWISE FEED INDICATOR PIN	1
8	5-8	螺母 SM 1/4"×24 S=11 H=5	NUT 1/4 - 24	1
9	5-9	送布联接连杆	SLIDE PLATE CONNECTING LINK A	1
10	5-10	螺轴 D=6.35 H=4.8	HINGE SCREW D=6.35 H=4.8	1
11	5-11	送布杆六角轴	STUD	1
12	5-12	送布连杆	INTERMEDI CONNECTING LINK	1
13	5-13	垫圈 5	WASHER 5×10.5×1	1
14	5-14	螺母 SM3/16"×28 S=7 H=3.3	NUT 3/16 - 28	1
15	5-15	纵针距调节杆底板	INDICATOR SPRING CONNECTING LINK	1
16	5-16	螺轴 D=6.35 H=9.6	HINGE SCREW D=6.35 H=9.6	1
17	5-17	纵针距调节杆	HANDLE & INDICATOR SPRING	1
18	5-18	螺钉 SM9/64"×40 L=6.0 D=7 H=2.5	SCREW 9/64 - 40 L=6	2
19	5-19	送布凸轮滚子	CAM ROLL	2
20	5-20	纵向送布杆	LENGTHWISE FEED LEVER	1
21	5-21	纵送布调节滑块	LENGTHWISE FEED LEVER SLIDE BLOCK	1
22	5-22	送布凸轮滚子轴	CAM ROLL SCREW STUD	2
23	5-23	送布轴	FEED STUD	2
24	5-24	纵针距刻度盘组件	LENGTHWISE FEED SCALE ASM	1
25	5-25	纵针距刻度板	LENGTHWISE FEED GRADUATE PLATE	1
26	5-26	纵针距刻度盘支架	PLATE BASE	1
27	5-27	纵针距限位器	FEED REGULATOR LEVER STOPPER	1
28	5-28	螺钉 SM3/16"×28 L=6 D=8 H=3.2	SCREW 3/16 - 28 L=6	2
29	5-29	螺母 SM15/64"×28 S=10 H=5	NUT 15/64 - 28	1
30	5-30	螺钉	SET SCREW	1
31	5-31	螺轴 D=6.35 H=4.8	HINGE SCREW D=6.35 H=4.8	2
32	5-32	送布连杆	INTERMEDI CONNECTING LINK	1
33	5-33	螺钉 SM15/64"×28 L=20	SCREW 15/64 - 28 L=20	1
34	5-34	纵向送布杆	CROSSWISE FEED LEVER	1
35	5-35	凸轮轴	CAM SHAFT	1
36	5-36	送布凸轮衬套	CAM BOSS	2
37	5-37	螺钉 SM9/32"×28 L=8	SCREW 9/32 - 28 L=8.0	4
38	5-38	凸轮轴右套	CAM SHAFT BUSHING, RIGHT	1
39	5-39	螺钉 SM15/64"×28 L=10.5	SCREW 15/64 - 28 L=10.5	1
40	5-40	横向送布凸轮	CROSSWISE FEED CAM	1
41	5-41	纵向送布凸轮	LENGTHWISE FEED CAM	1
42	5-42	螺钉 SM9/32"×28 L=13.5 S=3	SCREW 9/32 - 28 L=13.5	5
43	5-43	凸轮轴左套	CAM SHAFT BUSHING, LEFT	1
44	5-44	螺钉 SM15/64"×28 L=10.5	SCREW 15/64 - 28 L=10.5	1
45	5-45	送布底座	FEED PLATE	1
46	5-46	螺钉 SM3/32"×56 L=10 D=3.8 H=1.5	SCREW 3/32 - 56 L=10	2
47	5-47	横针距刻度板底座	CROSSWISE FEED GRADUATED PLATE	2
48	5-48	横针距刻度板	CROSSWISE FEED GRADUATED PLATE	1

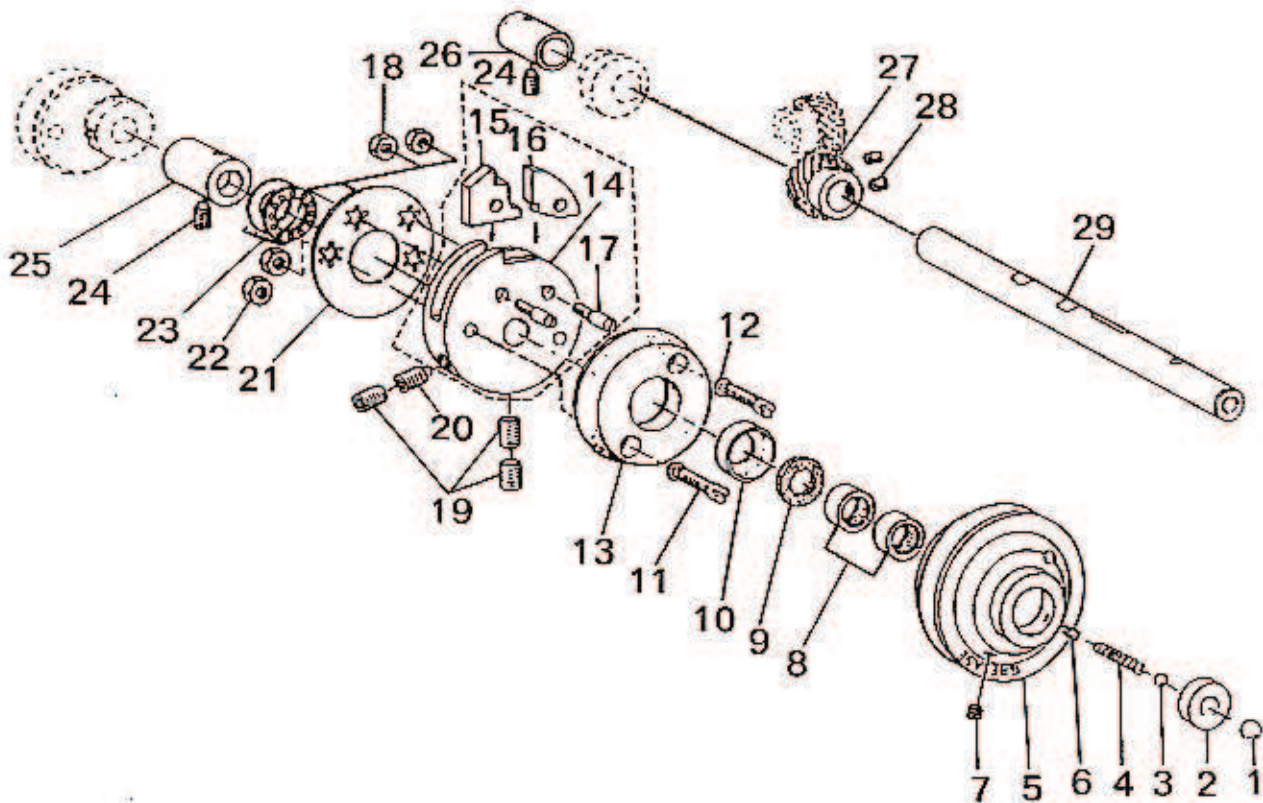
6. 提升扣夹联动机构部分  
 BUTTON CLAMP LIFTER COMPONENTS



序号	代 号	零 件 名 称	Description	数量
1	6-1	螺钉 SM15/64"×28 L=11S=9	SCREW 15/64 - 28 L=11	1
2	6-2	扣夹提升拉杆	BUTTON CLAMP LIFTING LEVER	1
3	6-3	垫圈 7.5×19×1.5	WASHER 7.5×19×1.5	4
4	6-4	调整垫(H=3.5 H=4 H=4.5 选择)	WASHER 7×20×(3.5;4;4.5)	1
5	6-5	橡胶缓冲垫	CUSHION	2
6	6-6	垫圈 8.5×22×1.8	WASHER 8.5×22.0×1.8	1
7	6-7	提升钩缓冲弹簧	SAFETY MAGNET	1
8	6-8	扣夹提升钩	BUTTON CLAMP LIFTING ROD ASM	1
9	6-9	扣夹提升拉杆	BUTTON CLAMP LIFTING LINK	1
10	6-10	拉杆导向轮	SLIDING ROLLER ASM	1
11	6-11	螺钉 SM1/4"×40 L=6 S=3	SCREW 1/4 - 40 L=6.0	1
12	6-12	扣夹提升偏心轮	ECCENTRIC CAM ASM	1
13	6-13	螺钉 SM1/4"×40 L=6 S=3	SCREW 1/4 - 40 L=6.0	2
14	6-14	扣夹提升叉形摆架	BUTTON CLAMP LIFTING LINK ASM	1
15	6-15	摆架挡圈 D=9.5 W=8	THRUST COLLAR ASM D=9.5 W=8	2
16	6-16	螺钉 SM11/64"×40 L=3.5	SCREW 11/64 - 40 L=3.5	4
17	6-17	摆架轴	LEVER SHAFT	1
18	6-18	螺钉 SM15/64"×28 L=10.5	SCREW 15/64 - 28 L=10.5	2
19	6-19	扣夹提升控制连杆	LIFTING LINK CONNECTING LINK	1
20	6-20	扣夹提升控制曲柄	LIFTING LINK;LEVER ASM	1
21	6-21	螺钉 SM3/16"×28 L=15.5 D=7 H=3.4	SCREW 3/16 - 28 L=15.5	1
22	6-22	控制曲柄螺轴 D=6.35 H=4.7	HINGE SCREW D=6.35 H=4.7	1
23	6-23	控制连杆螺轴 D=6.35 H=2.1	HINGE SCREW D=6.35 H=2.1	1
24	6-24	螺母 SM9/64"×40 S=6 H=3	NUT 9/64 - 40	1
25	6-25	垫圈 3.7×7×1	WASHER 3.7×7×1	1
26	6-26	扣夹提升滚子	BUTTON CLAMP LIFTING ROD ROLL	1
27	6-27	针杆驱动摆杆轴套	BUSHING	1
28	6-28	针杆驱动摆杆轴	BUTTON CLAMP LIFTING LEVER SHAFT	1
29	6-29	动剪前驱动板	CONNECTING LINK,FRONT	1
30	6-30	球关节螺栓	JOINT STUD	1
31	6-31	剪线球关节轴承	FEED ADJUSTING JOINT	1
32	6-32	垫圈 5.1×7.5×0.5	WASHER 5.1×7.5×0.5	1
33	6-33	螺母 M5	NUT M5	2
34	6-34	剪线球关节连接螺栓	CONNECTING SCREW	1
35	6-35	螺母 SM9/32"×28 S=11 H=3	NUT 9/32 - 28	2
36	6-36	剪线联接板	CONNECTING LINK,REAR	1
37	6-37	剪线连杆螺轴 D=6.35 H=3.2	HINGE SCREW D=6.35 H=3.2	1
38	6-38	剪线联接板螺轴 D=7.94 H=4	HINGE SCREW D=7.94 H=4	1
39	6-39	螺母 SM 3/16"×32 S=9 H=3	NUT 3/16 - 32	1
40	6-40	螺母 SM 15/64"×28 S=9 H=3	NUT 15/64 - 28	1
41	6-41	剪线杠杆	THREAD TRIMMING LEVER	1
42	6-42	剪线杠杆螺轴 D=7.94 H=3.1	HINGE SCREW D=7.94 H=3.1	1
43	6-43	螺母 SM11/64"×40 S=9 H=4.5	NUT 11/64 - 40	1
44	6-44	剪线杠杆支座	THREAD TRIM LEVER BASE	1
45	6-45	螺钉 SM11/64"×40 L=14 D=7 H=2.5	SCREW 11/64 - 40 L=14	2
46	6-46	剪线连杆	THREAD TRIMMING LINK	1
47	6-47	提升拉杆螺轴 D=6.35 H=13.2	HINGE SCREW D=6.35 H=13.2	1
48	6-48	扣夹提升拉杆拉簧	NIPPER BAR ACTUATING LEVER SPRING	1
49	6-49	拉簧柱圈	WASHER	1

# 7. 驱动轴部分

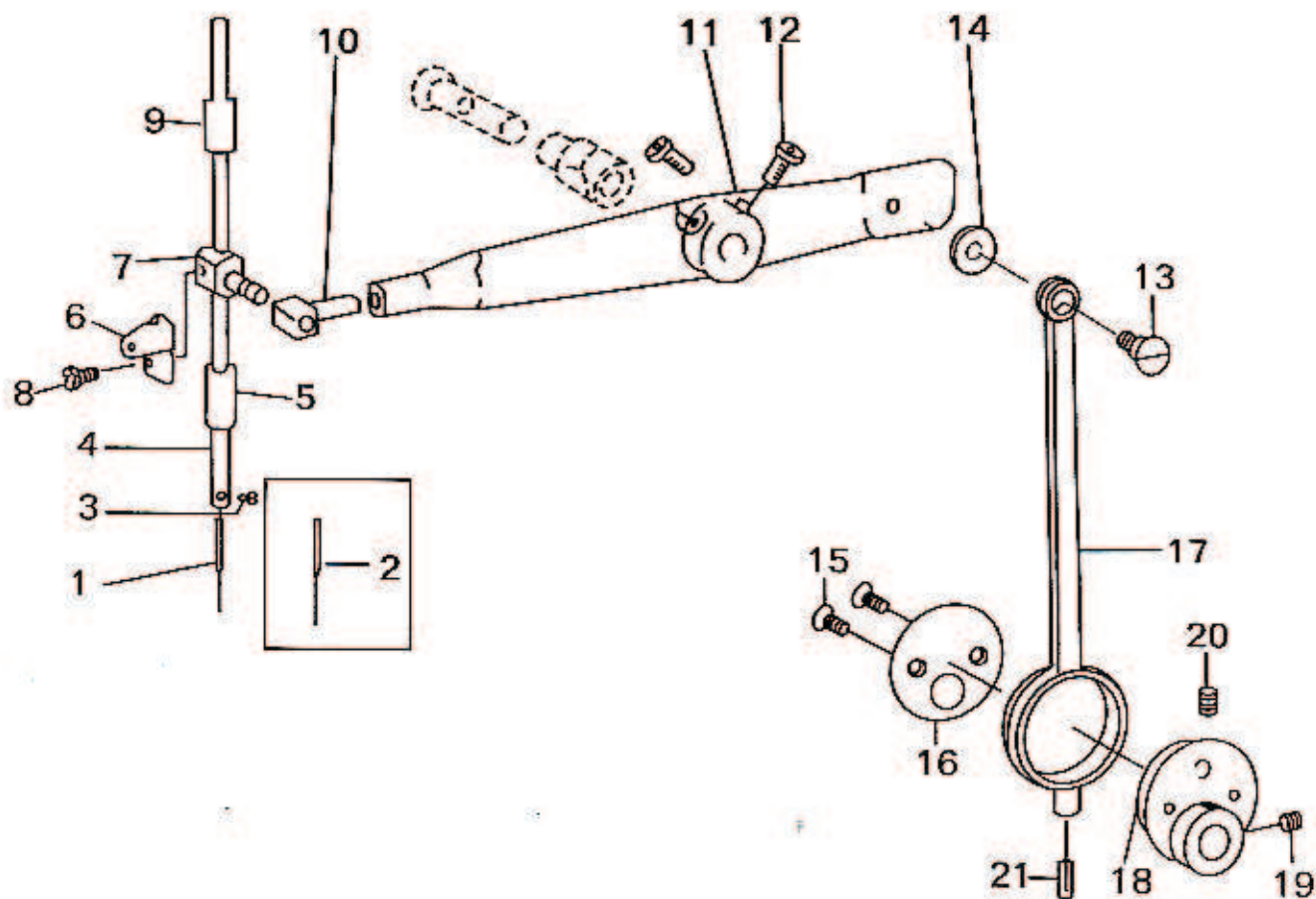
## NEEDLE BAR DRIVING MECHANISM COMPONENTS



序号	代号	零件名称	Description	数量
1	7-1	钢球 D=7.94	BALL LARGE PULLEY INSERT	1
2	7-2	起动球座	BALL SMALL	1
3	7-3	钢球 D=5.56	SPRING	1
4	7-4	驱动轴弹簧	NEEDLE DRIVING PULLEY	1
5	7-5	驱动皮带轮		1
6	7-6	螺钉 SM11/64"×40 L=6.5	SCREW 11/64 - 40 L=6.5	1
7	7-7	螺钉 SM15/64"×28L=4	SCREW 15/64 - 28 L=4	1
8	7-8	单列向心滚针轴承	NEEDLE BEARING	2
9	7-9	挡油毛毡	GREASE RETAINING WICK	1
10	7-10	挡油毛毡盒	RETAINING WASHER	1
11	7-11	螺钉 SM15/64"×28 L=23.5	SCREW 15/64 - 28 L=23.5	2
12	7-12	垫圈 6.2×9.5×1	WASHER 6.2×9.5×1	2
13	7-13	驱动摩擦轮	NEEDLE DRIVING PULLEY CLUTCH D	1
14	7-14	停车凸轮	STOP MOTION DISC	1
15	7-15	停车爪 A	STOP MOTION DISC PAWL A	1
16	7-16	停车爪 B	STOP MOTION DISC PAWL B	1
17	7-17	螺钉轴	SCREW	2
18	7-18	螺母 SM15/64"×28 S=10 H=4	NUT 15/64 - 28	2
19	7-19	螺钉 SM5/16"×24 L=10 S=4	SCREW 5/16 - 24 L=10.0	3
20	7-20	停车凸轮定位螺钉	SCREW 5/16 - 24 L=17.0	1
21	7-21	弹簧垫圈	ECCENTRIC WASHER	1
22	7-22	螺母 SM15/64"×28 S=10 H=4	NUT 15/64 - 28	2
23	7-23	推力球轴承	THRUST BALL BEARING	1
24	7-24	螺钉 15/64"×28 L=10.5	SCREW 15/64 - 28 L=10.5	2
25	7-25	驱动轴右套	PULLEY SHAFT BUSHING, RIGHT	1
26	7-26	驱动轴左套	PULLEY SHAFT BUSHING, LEFT	1
27	7-27	螺旋齿轮 A	DRIVING GEAR ASM.	1
28	7-28	螺钉 SM1/4"×40 L=6 S=3	SCREW 1/4 - 40 L=6.0	2
29	7-29	驱动轴	NEEDLE DRIVING PULLEY SHAFT	1

## 8. 针杆部分

### NEEDLE BAR DRIVING MECHANISM COMPONENTS



序号	代号	零件名称	Description	数量
1	8-1	机针 TQ×7 # 16	NEEDLE TQ×7 # 16	1
2	8-2	机针 TQ×7 # 20	NEEDLE TQ×7 # 20	1
3	8-3	螺钉 SM1/8"×44 L=4.5	SCREW 1/8 - 44 L= 4.5	1
4	8-4	针杆	NEEDLE BAR	1
5	8-5	针杆下套	NEEDLE BAR BUSHING LOWER	1
6	8-6	针杆挑线杆	NEEDLE BAR BALANCE	1
7	8-7	挑线杆夹紧块	NEEDLE BAR CLAMP	1
8	8-8	螺钉 SM9/64"×40 L=8.5 D=6 H=2.5	SCREW 6/64 - 40 L=12	1
9	8-9	针杆上套	NEEDLE BAR BUSHING, UPPER	1
10	8-10	针杆滑块	NEEDLE BAR BEARING BLOCK	1
11	8-11	针杆驱动杠杆	NEEDLE BAR ROCKING PIPE	1
12	8-12	螺钉 SM15/64"×28 L=15.5 S=9	SCREW M6 L=14	2
13	8-13	铰链螺钉	HINGE SCREW D=9.53 H=8	1
14	8-14	垫圈	WASHER	1
15	8-15	螺钉 SM11/64"×40 L=8.5	SCREW 11/64 - 40 L=8.5	1
16	8-16	止推挡板	THRUST HOLDER	1
17	8-17	连杆	CRANK ROD	1
18	8-18	偏心凸轮	ECCENTRIC CAM	1
19	8-19	螺钉 SM1/4"×40 L=6	SCREW 1/4 - 40 L=6	1
20	8-20	螺钉 SM1/4"×40 L=8.5	SCREW 1/4 - 40 L=8.5	1
21	8-21	油芯	OIL WICK	1